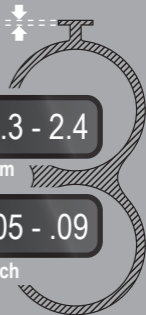
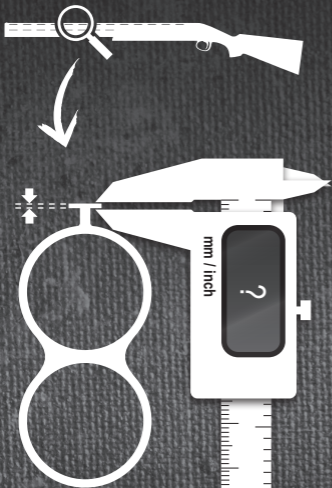


Aimpoint®

MICRO S-1™

BASE PLATE SELECTION GUIDE



1.3 - 2.4

mm

.05 - .09

inch



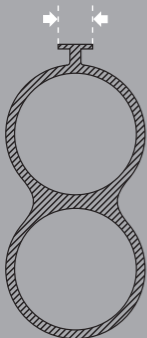
2.4 - 3.6

mm

.09 - .14

inch





6 - 8

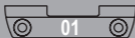
mm

.24 - .31

inch



+



8 - 10

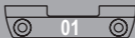
mm

.31 - .39

inch



+



10 - 12

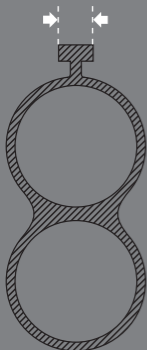
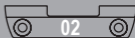
mm

.39 - .47

inch



+



6 - 8

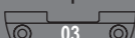
mm

.24 - .31

inch



+



8 - 10

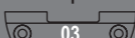
mm

.31 - .39

inch



+



10 - 12

mm

.39 - .47

inch



+

